

## OPTIMIZE NETWORK PERFORMANCE

The Blue Coat CacheFlow™ appliance enables service providers like you to manage dramatic increases in network traffic and subscriber growth. Utilizing highly effective Web caching technology, CacheFlow appliances save bandwidth on expensive international links and backhaul traffic, while improving the end-user Web experience. Through a scalable architecture of cache farms, service providers can accelerate the delivery of rich Web 2.0 content, large files and video. This significantly reduces infrastructure costs by controlling bandwidth consumption while improving customer satisfaction.

## BENEFITS

### Save Bandwidth

By caching content in-region and closer to the user, the CacheFlow appliance drastically reduces bandwidth consumption. This translates into a rapid return on investment and significant long-term cost savings for service providers on international bandwidth, as well as reducing backhaul traffic on domestic links. By conserving and optimizing bandwidth with caching, you are positioned to serve more users, deliver next-generation services and better leverage existing network investments.

### Accelerate Web 2.0 and Rich Media Delivery

CacheFlow enables you to cache popular, rich media and Web 2.0 sites, including file-sharing and video sites. Caching saves on bandwidth while boosting the user experience.

With CacheFlow, you can cache and deliver content served from dynamically-generated URLs and even address content marked as non-cacheable. In addition, the CacheFlow appliance validates content freshness before serving that content to the end user guaranteeing consistency with the origin server.

### Ensure Caching Effectiveness

CacheFlow leverages Blue Coat CachePulse™ for automatic, network-based updates as the Web changes to ensure the appliance effectively caches content and consistently delivers high bandwidth savings. Customers can also provide direct feedback into the CachePulse community and share new or emerging sites in their region that could benefit from caching.

### Filter and Secure Web Traffic

By turning on the built-in Blue Coat WebFilter™ option, CacheFlow filters and secures web traffic, including undesirable

content and malware-infected sites.

With WebFilter you benefit from the Blue Coat WebPulse™ collaborative cloud defense, which leverages more than 62 million users, supports more than 50 languages, and provides more than six billion real-time Web content ratings per day. CacheFlow also allows you to create customized exception and block lists for specific sites, as well as leverage the Internet Watch Foundation list to filter illegal content.

### Scale with User and Traffic Growth

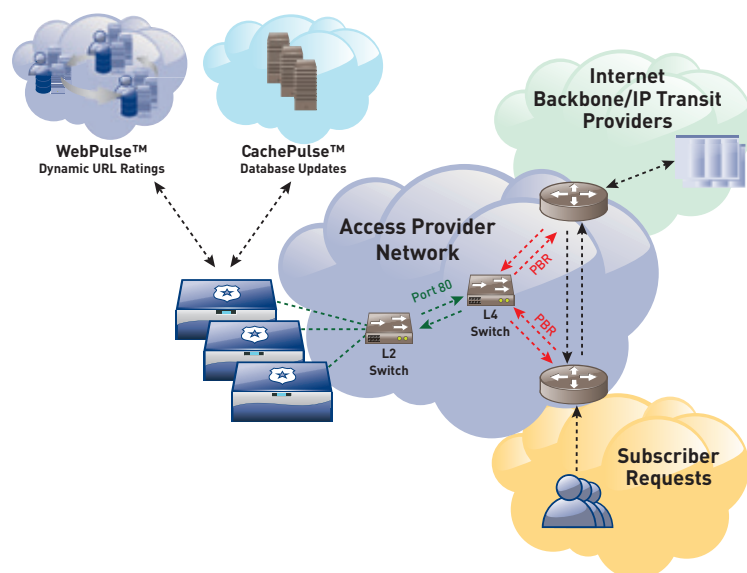
CacheFlow was designed for high throughput service provider environments with the ability to scale to multi-gigabit support through the use of cache farms. CacheFlow offers both 1GigE and 10GigE interfaces for high-speed network infrastructure requirements and tight integration with load-balancing switches for greater scalability and performance. You can easily accommodate more users and traffic simply by adding more appliances or building content-specific cache farms over time.

### Manage and Report on Web Traffic

CacheFlow provides an intuitive Web-based management console and command-line tools for administering the appliance, monitoring its performance, and reporting in real-time on bandwidth savings. For ongoing monitoring, health checks and reporting on key performance metrics, CacheFlow integrates via SNMP with common network management solutions and supports event logging via syslog.

### Carrier-class Service and Support

Global 24/7 support options are available for the CacheFlow appliance, and next business day availability for hardware replacement. The appliance is supported by a dedicated team of service provider experts at Blue Coat. Plus, the appliance includes built-in features to proactively mitigate issues and expedite resolution, such as proactive monitoring and analysis of heartbeats and automatic uploads of system information to Blue Coat support.



## Specifications

Hardware Features	CF 5000
CPU	Dual 2.6GHz Istanbul (AMD part# 2435) CPUs
Disk Drives	8x1TB SAS
RAM	32GB RAM
Network Interfaces	(4) integrated (on board) 10/100/1000 Base-T NICs Two Dual 10G Copper Cards, SSL Card, One Open PCIE Slot
Optional Cards	None
Optional NICs	None
Dimensions and Weight	
Enclosure	19" Rack-mountable
Dimensions (LxWxH)	690mm x 485mm x 170mm (27.17" x 19.09" x 6.69") (including handles)
Weight (maximum)	37kg (81.57 lbs), +/- 5% (excluding rack mount kit)
Operating Environment	
Power	AC Power Dual Hot Swap 750watts each
Temperature	5°C to +40°C (41°F to 104°F)
Humidity	Operating: 20% to 80% relative humidity, non-condensing, Storage: 10% to 90% relative humidity, non-condensing
Altitude	Operating: Up to 3048 M (10,000 ft) Storage: Up to 12192 M (40,000 ft)
DC Adaptor Voltage	N/A
Regulations	
Emissions	FCC Class A, EN55022 Class A, VCCI Class A No.1706609, BSMI, CCC, C-tick, RRL
Safety	UL 60950-1 1st Edition, CSA C22.2 No. 60950-1-03 1st Edition, EN 60950-1, TUV-GS, CCC, BSMI, Dictamen
Standards	UL/CSA, TUV-S, BSMI, C-tick, CCC, CE
Product Warranty	Limited, non-transferable hardware warranty for a period of one (1) year from date of shipment. BlueTouch Support contracts available for 24/7 software support and options for hardware support.